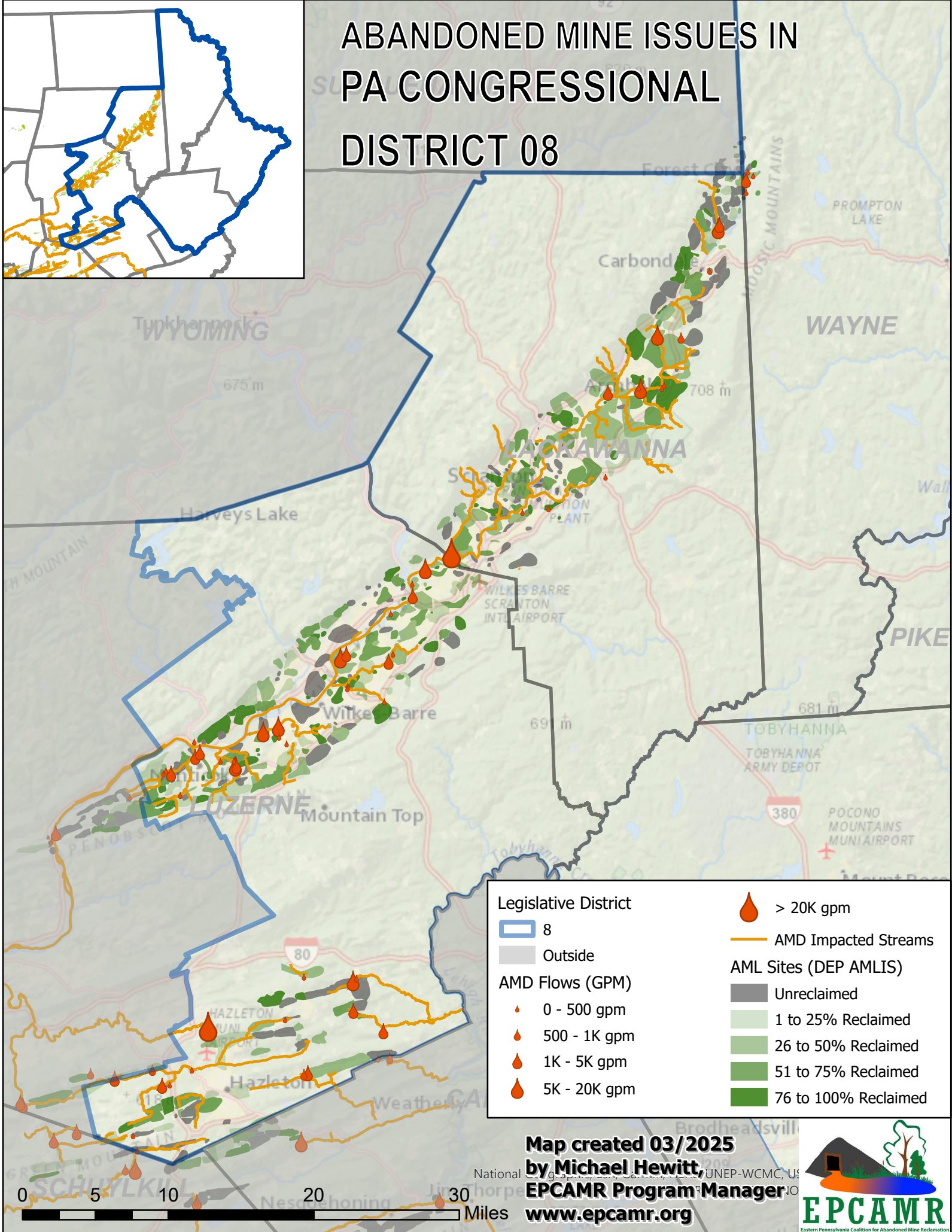
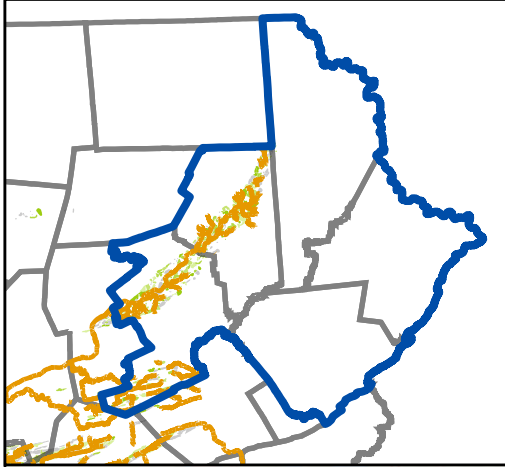
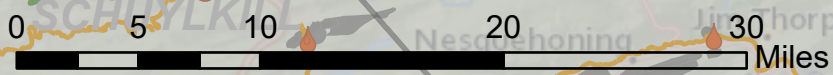


ABANDONED MINE ISSUES IN PA CONGRESSIONAL DISTRICT 08

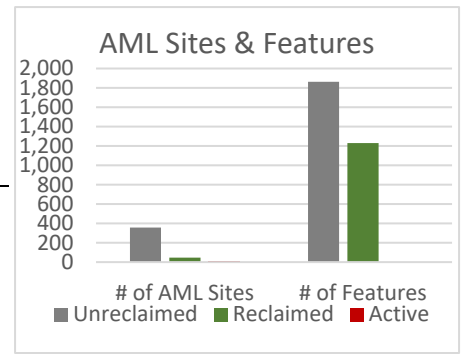


Legislative District	> 20K gpm
8	AMD Impacted Streams
Outside	AML Sites (DEP AMLIS)
AMD Flows (GPM)	Unreclaimed
0 - 500 gpm	1 to 25% Reclaimed
500 - 1K gpm	26 to 50% Reclaimed
1K - 5K gpm	51 to 75% Reclaimed
5K - 20K gpm	76 to 100% Reclaimed

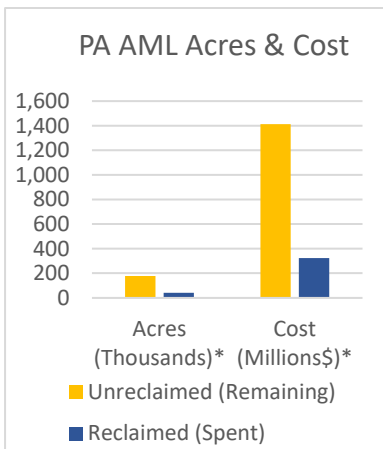
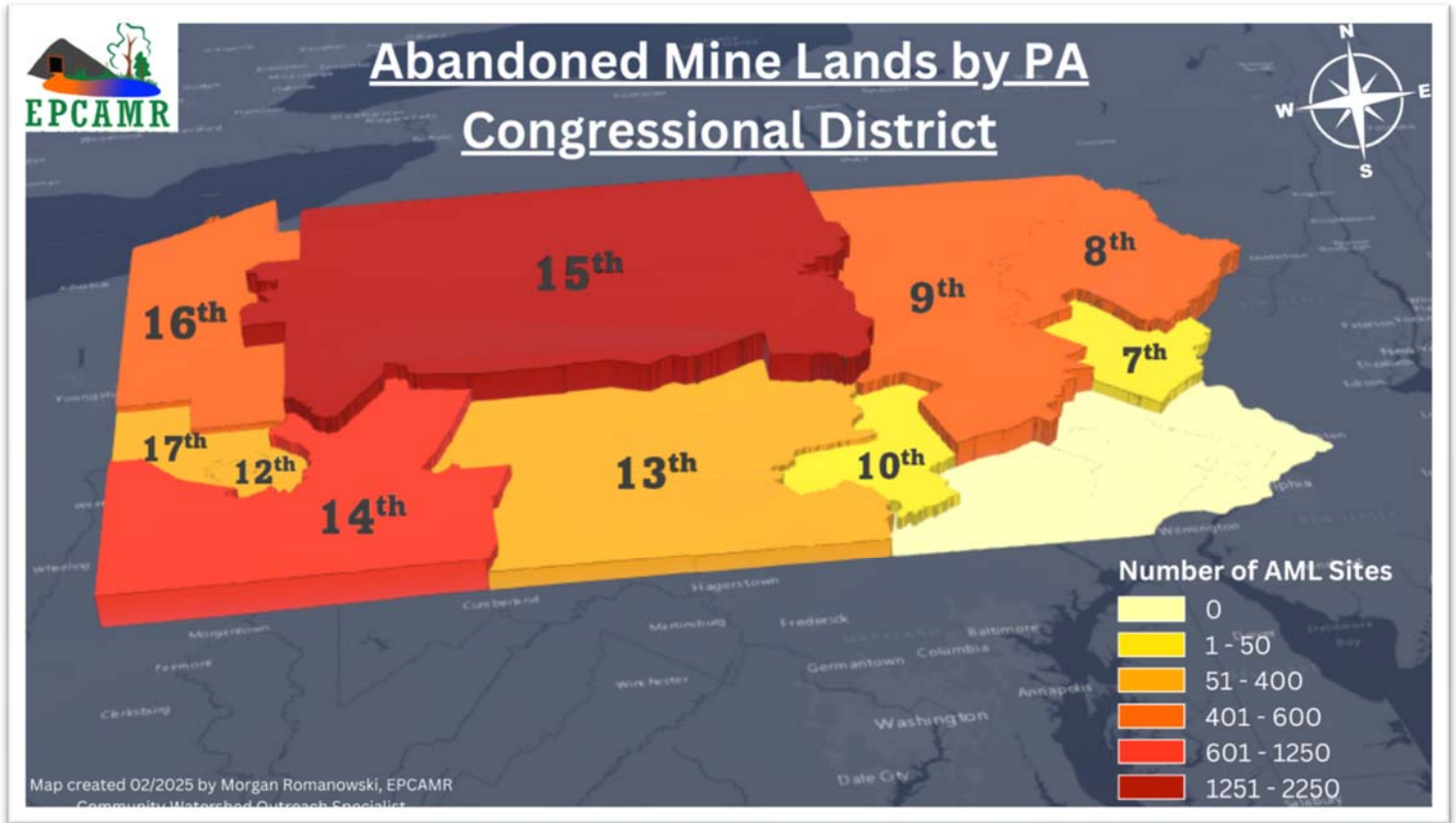
Map created 03/2025
 by Michael Hewitt,
 EPCAMR Program Manager
www.epcamr.org



District 8 Inventory '25	AML Sites	Features	% of AML Features	Acres*
Unreclaimed	357	1,862	60.2%	15,770
Reclaimed	45	1,229	39.8%	7,455
Active	4			
Total	406	3,091		23,225



AMD Impaired Streams ‡ 221 miles



Statewide PA Inventory '25	AML Sites	Features	% of AML Features	Acres*
Unreclaimed	5,315	27,507	79.4%	176,576
Reclaimed	252	7,149	20.6%	40,349
Active	18			
Total	5,585	34,656		216,925

AMD Impaired Streams ‡ 5,609 miles
Delisted Streams '22-'24 134 miles

Individual features include site conditions like open mine shafts, waste coal piles, strip mine pits, subsidence prone areas, contaminated mine water discharges, and etc. Sites were abandoned prior to the passage of the Surface Mining Control and Reclamation act of 1977. Active status refers to remining of the site.

*2021 PA DEP BAMR Reclamation and Remining Incentives Report cleanup costs averaged ~\$9,500/per acre. These are conservative acreage estimates: AML Feature Polygon layer was projected in ArcGIS from GCS North American 1983 to USA Contiguous Albers Equal Area Conic to preserve area and does not include AML Feature Points in the calculation of acreage.

‡ AMD stream miles do not include ~1,800 miles of Mercury contaminated streams loosely linked to AMD in the entire Clarion River Watershed. Source: 2024 Pennsylvania Integrated Water Quality Report: Clean Water Act Section 303(d) List and 305(b) Report