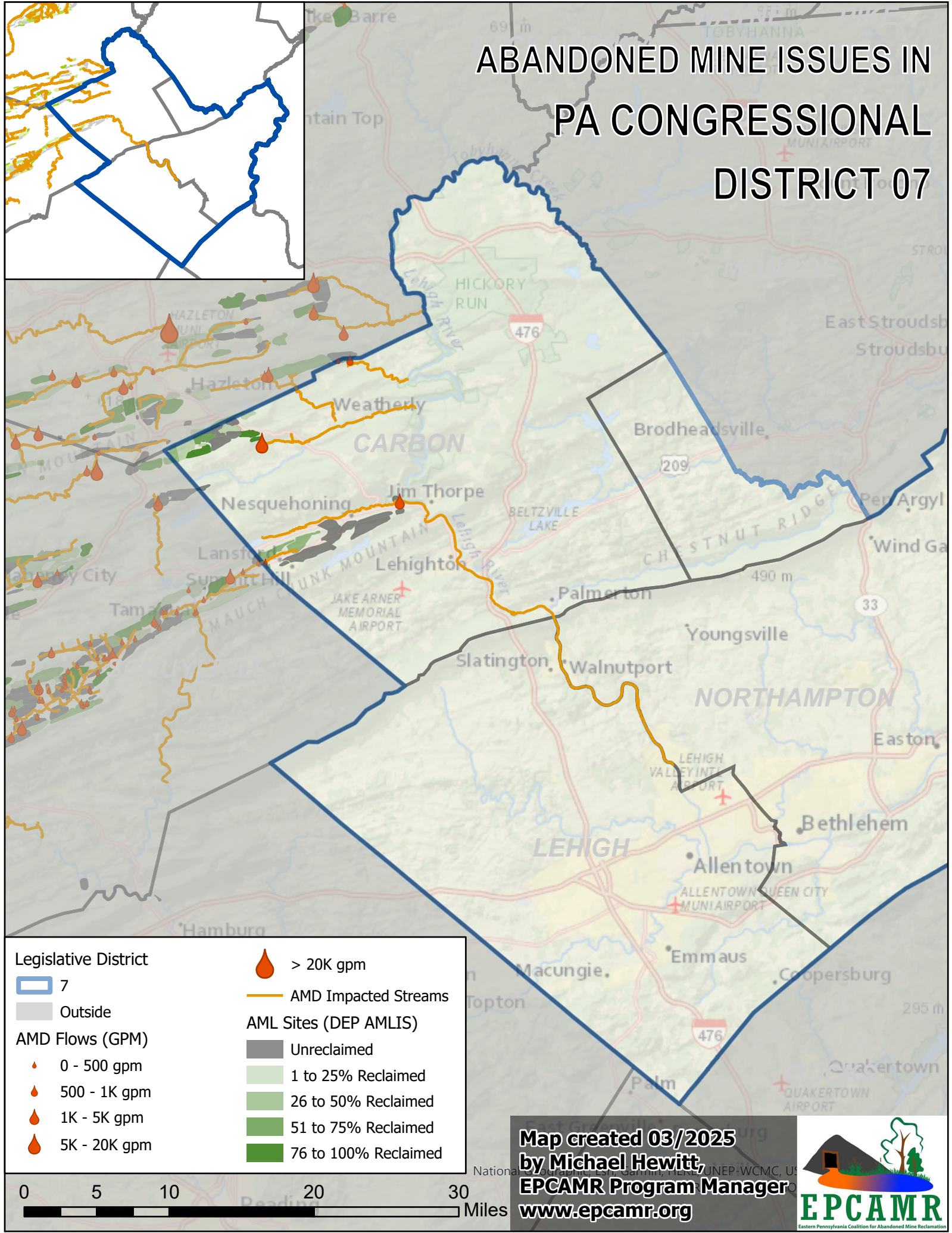


# ABANDONED MINE ISSUES IN PA CONGRESSIONAL DISTRICT 07



**Legislative District**

- 7
- Outside

**AMD Flows (GPM)**

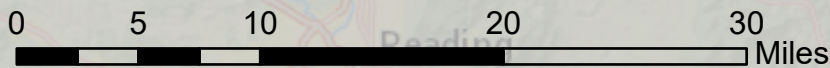
- 0 - 500 gpm
- 500 - 1K gpm
- 1K - 5K gpm
- 5K - 20K gpm

● > 20K gpm

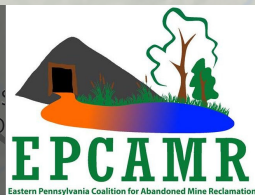
— AMD Impacted Streams

**AML Sites (DEP AMLIS)**

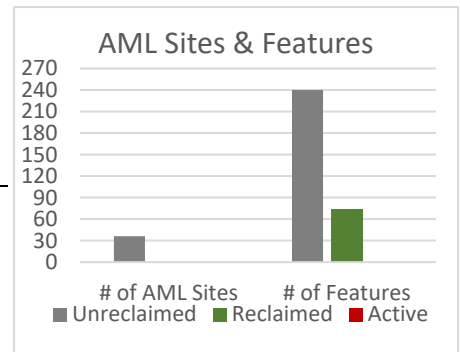
- Unreclaimed
- 1 to 25% Reclaimed
- 26 to 50% Reclaimed
- 51 to 75% Reclaimed
- 76 to 100% Reclaimed



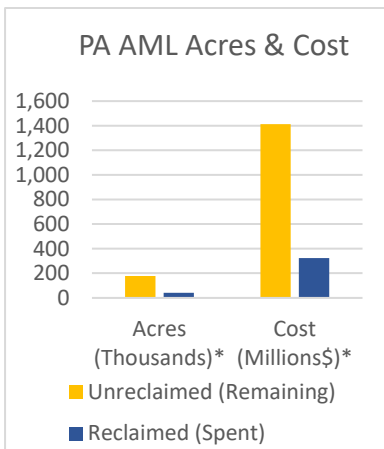
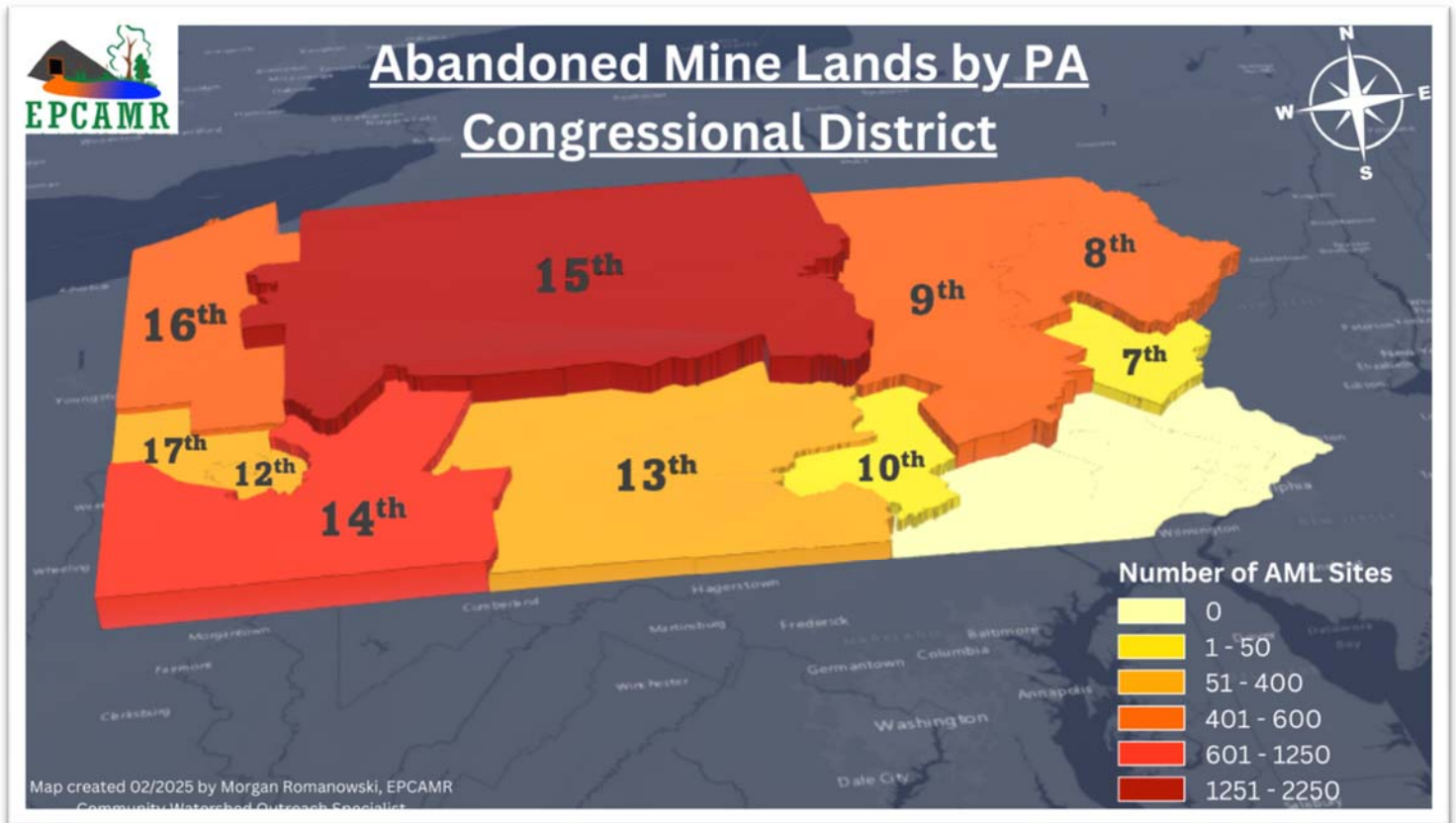
Map created 03/2025  
by Michael Hewitt,  
EPCAMR Program Manager  
[www.epcamr.org](http://www.epcamr.org)



| District 7 Inventory '25 | AML Sites | Features   | % of AML Features | Acres*       |
|--------------------------|-----------|------------|-------------------|--------------|
| Unreclaimed              | 36        | 240        | 76.4%             | 2,369        |
| Reclaimed                | 0         | 74         | 23.6%             | 386          |
| Active                   | 0         |            |                   |              |
| <b>Total</b>             | <b>36</b> | <b>314</b> |                   | <b>2,755</b> |



AMD Impaired Streams ‡ 58 miles



| Statewide PA Inventory '25 | AML Sites    | Features      | % of AML Features | Acres*         |
|----------------------------|--------------|---------------|-------------------|----------------|
| Unreclaimed                | 5,315        | 27,507        | 79.4%             | 176,576        |
| Reclaimed                  | 252          | 7,149         | 20.6%             | 40,349         |
| Active                     | 18           |               |                   |                |
| <b>Total</b>               | <b>5,585</b> | <b>34,656</b> |                   | <b>216,925</b> |

AMD Impaired Streams ‡ 5,609 miles  
Delisted Streams '22-'24 134 miles

Individual features include site conditions like open mine shafts, waste coal piles, strip mine pits, subsidence prone areas, contaminated mine water discharges, and etc. Sites were abandoned prior to the passage of the Surface Mining Control and Reclamation act of 1977. Active status refers to remining of the site.

\*2021 PA DEP BAMR Reclamation and Remining Incentives Report cleanup costs averaged ~\$9,500/per acre. These are conservative acreage estimates: AML Feature Polygon layer was projected in ArcGIS from GCS North American 1983 to USA Contiguous Albers Equal Area Conic to preserve area and does not include AML Feature Points in the calculation of acreage.

‡ AMD stream miles do not include ~1,800 miles of Mercury contaminated streams loosely linked to AMD in the entire Clarion River Watershed. Source: 2024 Pennsylvania Integrated Water Quality Report: Clean Water Act Section 303(d) List and 305(b) Report