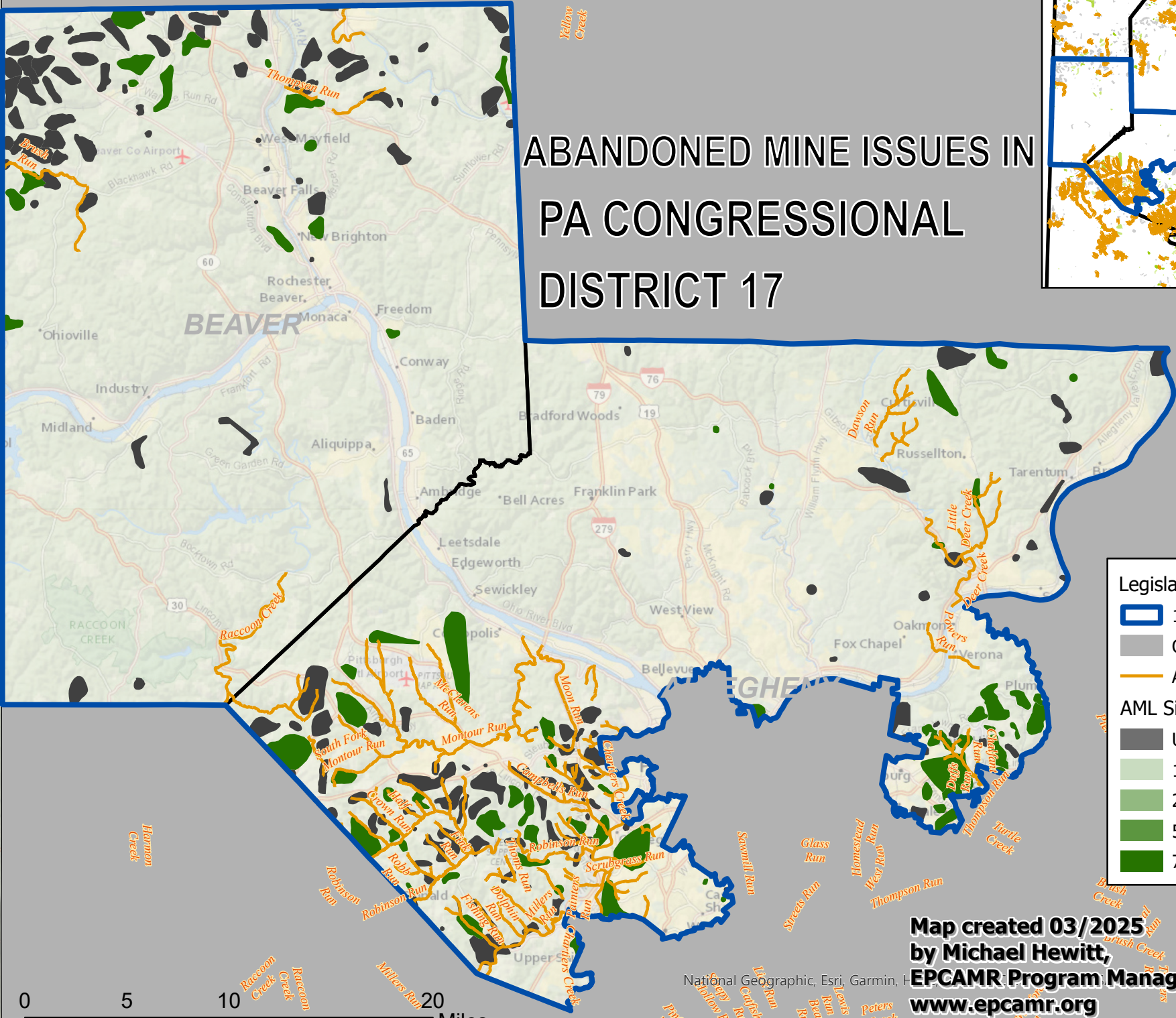
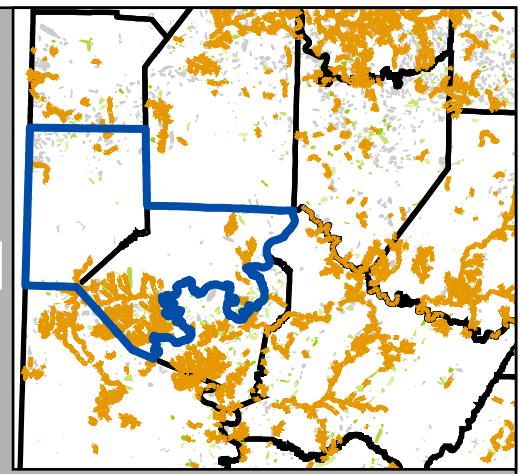


ABANDONED MINE ISSUES IN PA CONGRESSIONAL DISTRICT 17



Legislative District

- 17
- Outside
- AMD Impacted Streams

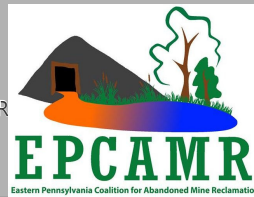
AML Sites (DEP AMLIS)

- Unreclaimed
- 1 to 25% Reclaimed
- 26 to 50% Reclaimed
- 51 to 75% Reclaimed
- 76 to 100% Reclaimed

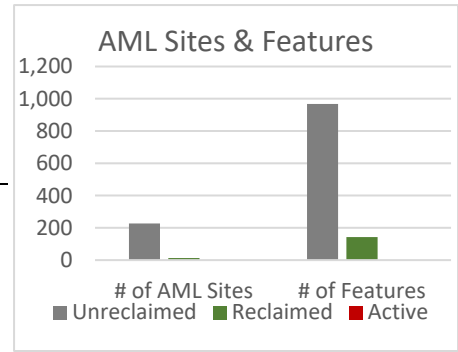


Map created 03/2025
by Michael Hewitt,
EPCAMR Program Manager
www.epcamr.org

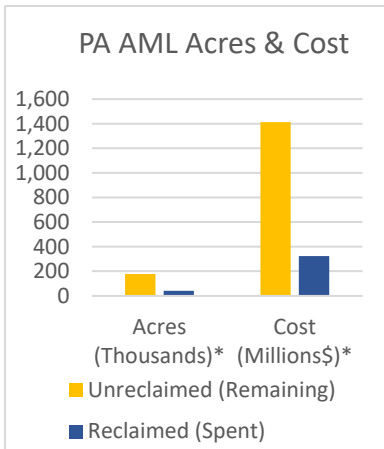
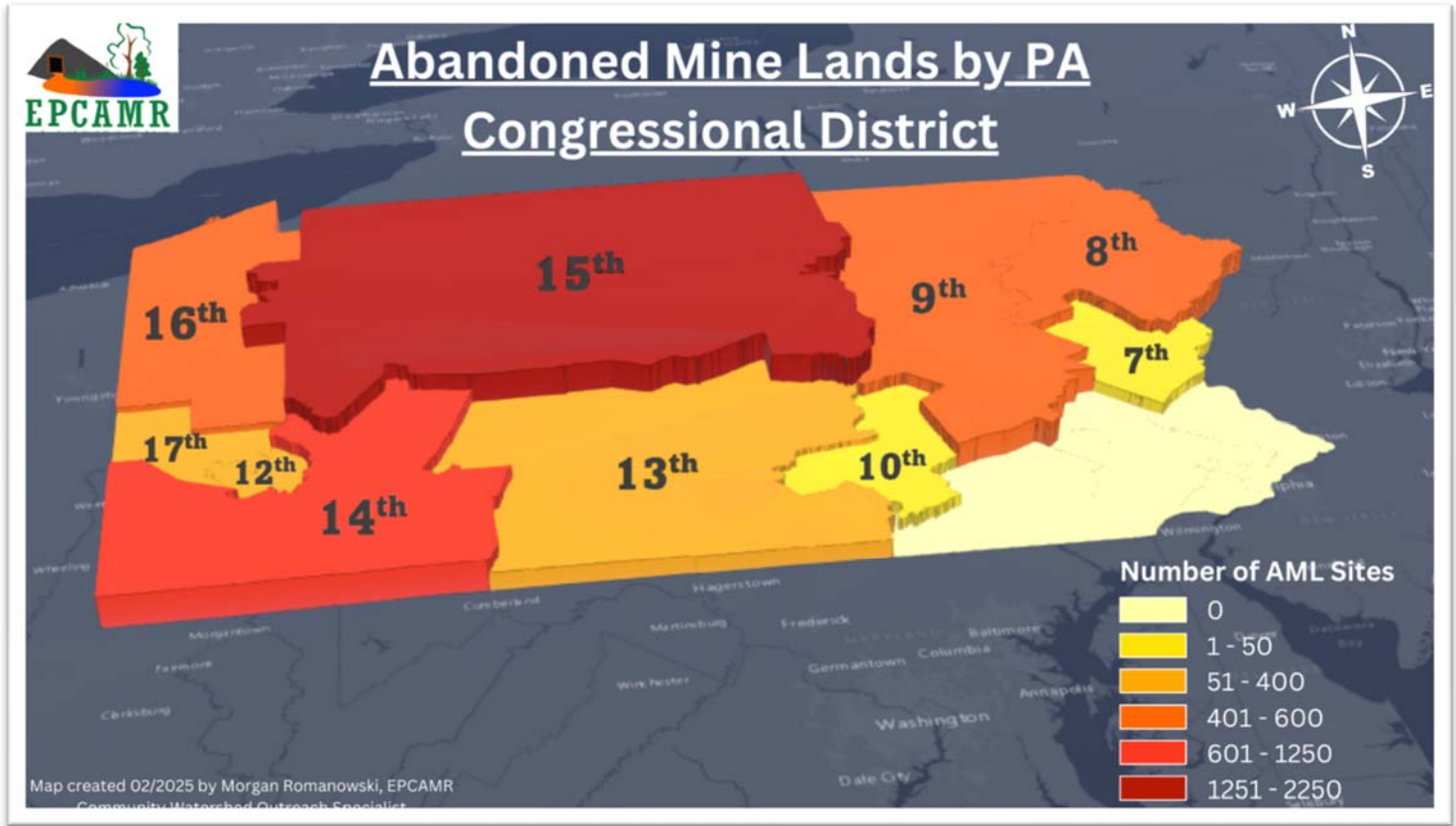
National Geographic, Esri, Garmin, F



District 17 Inventory '25	AML Sites	Features	% of AML Features	Acres*
Unreclaimed	227	968	87.1%	5,143
Reclaimed	13	143	12.9%	951
Active	1			
Total	241	1,111		6,094



AMD Impaired Streams ‡ 234 miles



Statewide PA Inventory '25	AML Sites	Features	% of AML Features	Acres*
Unreclaimed	5,315	27,507	79.4%	176,576
Reclaimed	252	7,149	20.6%	40,349
Active	18			
Total	5,585	34,656		216,925

AMD Impaired Streams ‡ 5,609 miles
Delisted Streams '22-'24 134 miles

Individual features include site conditions like open mine shafts, waste coal piles, strip mine pits, subsidence prone areas, contaminated mine water discharges, and etc.

*2021 PA DEP BAMR Reclamation and Remining Incentives Report cleanup costs averaged ~\$9,500/per acre. These are conservative acreage estimates: AML Feature Polygon layer was projected from GCS North American 1983 to USA Contiguous Albers Equal Area Conic to preserve area and does not include AML Feature Points.

‡ AMD stream miles do not include ~1,800 miles of Mercury contaminated streams loosely linked to AMD in the entire Clarion River Watershed. Source: 2024 Pennsylvania Integrated Water Quality Report: Clean Water Act Section 303(d) List and 305(b) Report