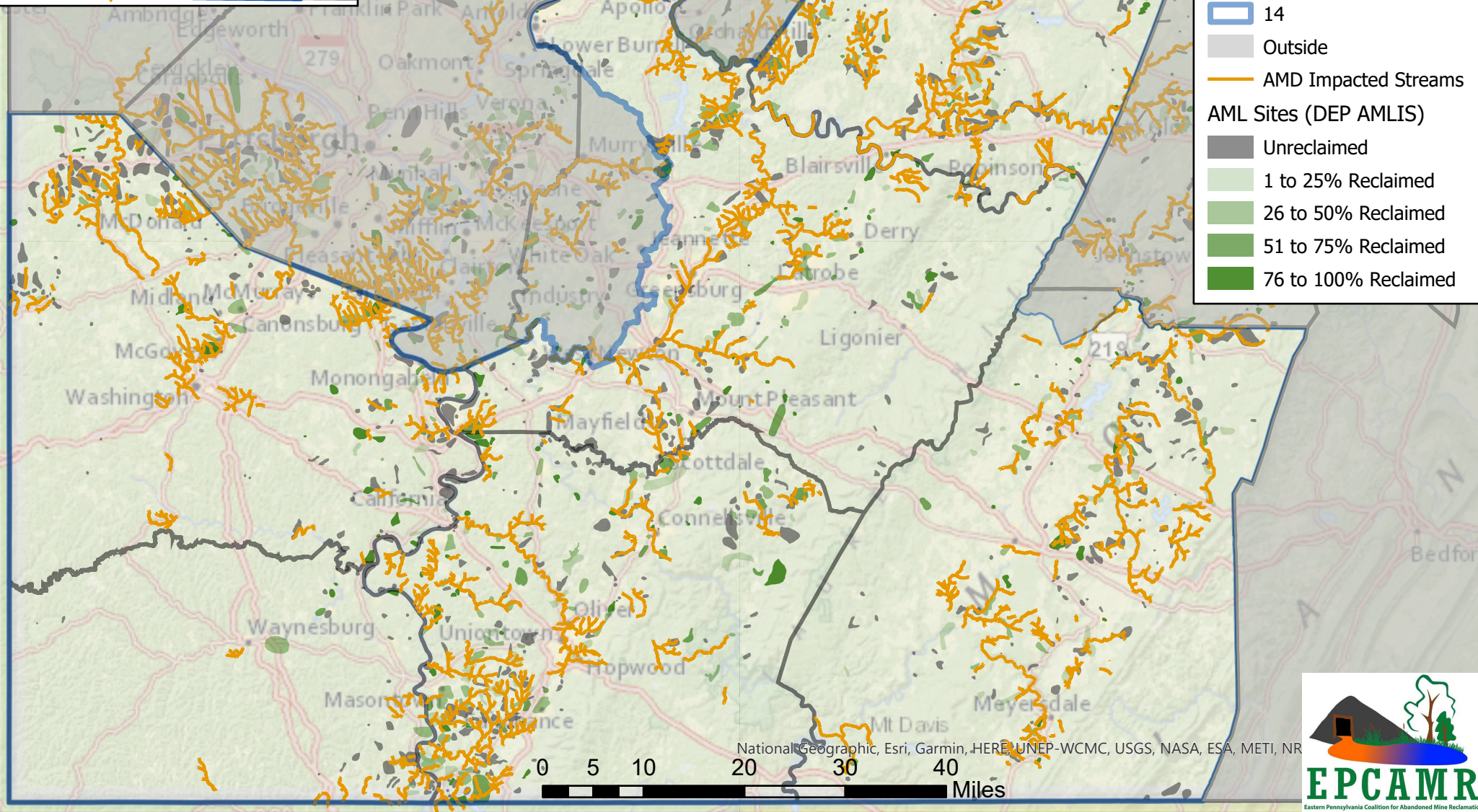
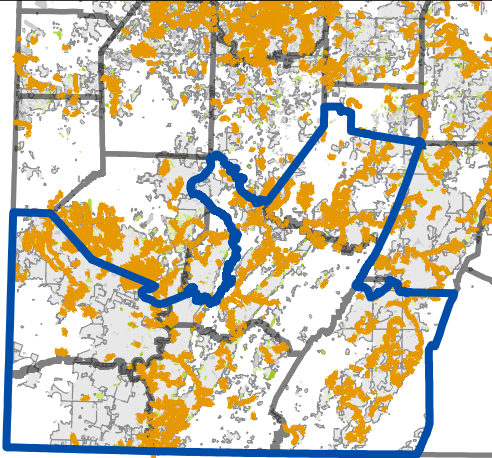


# ABANDONED MINE ISSUES IN PA CONGRESSIONAL DISTRICT 14

Map created 03/2025  
by Michael Hewitt,  
EPCAMR Program Manager  
[www.epcamr.org](http://www.epcamr.org)



**Legislative District**

- 14
- Outside

**AMD Impacted Streams**

- 

**AML Sites (DEP AMLIS)**

- Unreclaimed
- 1 to 25% Reclaimed
- 26 to 50% Reclaimed
- 51 to 75% Reclaimed
- 76 to 100% Reclaimed

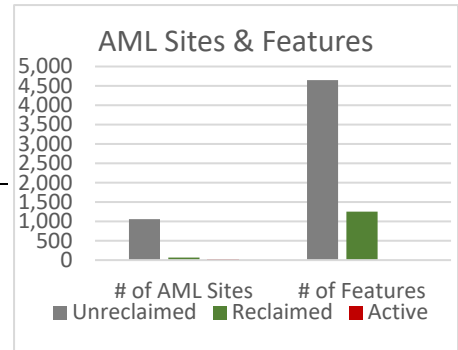
National Geographic, Esri, Garmin, HERE, UNEP-WCMC, USGS, NASA, ESA, METI, NRC

0 5 10 20 30 40 Miles

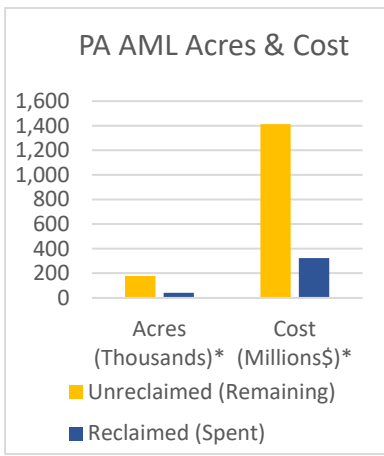
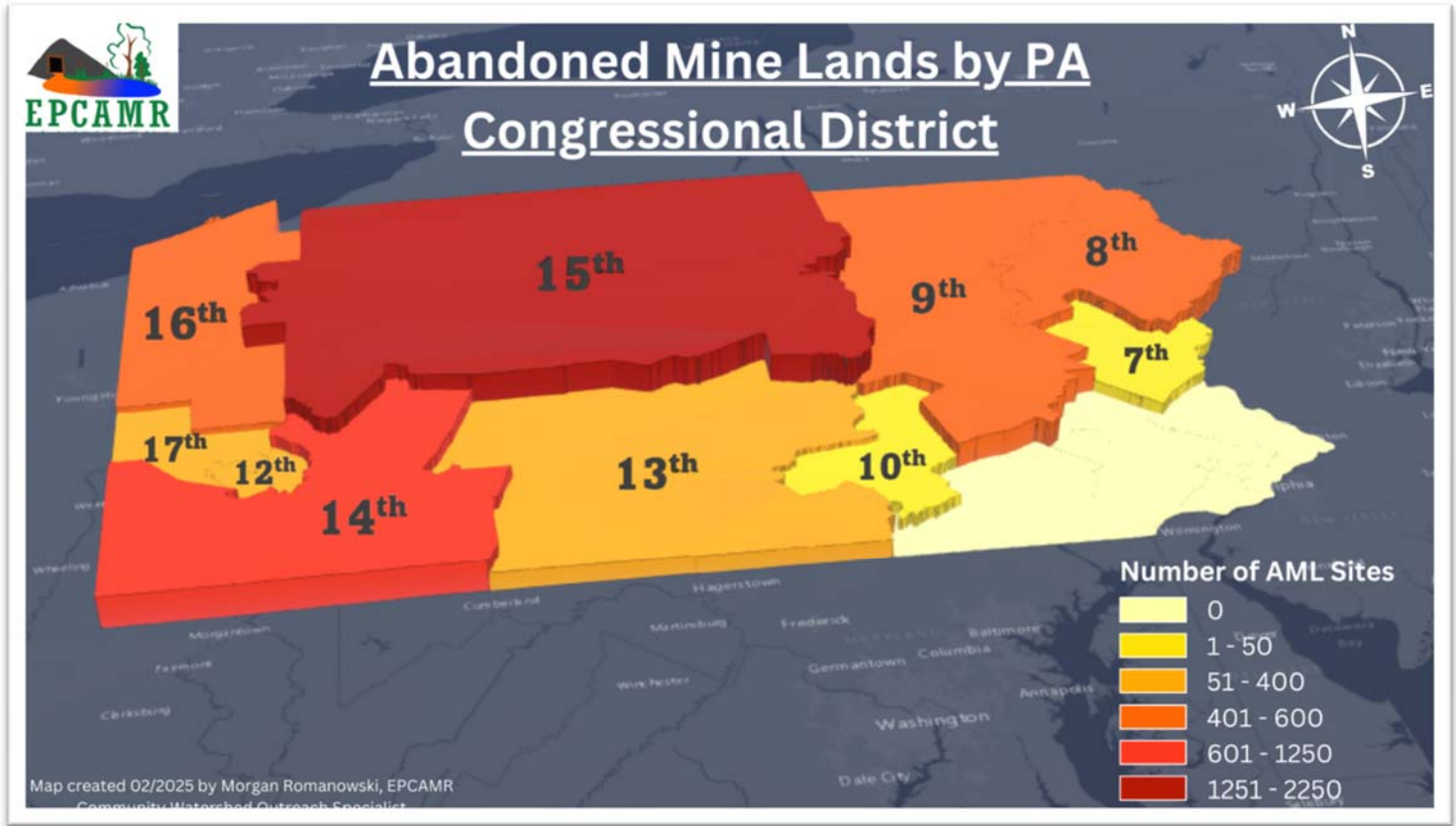




District 14 Inventory '25	AML Sites	Features	% of AML Features	Acres*
Unreclaimed	1,056	4,650	78.8%	20,926
Reclaimed	65	1,251	21.2%	6,399
Active	5			
<b>Total</b>	<b>1,126</b>	<b>5,901</b>		<b>27,325</b>



AMD Impaired Streams ‡ 1,417 miles



Statewide PA Inventory '25	AML Sites	Features	% of AML Features	Acres*
Unreclaimed	5,315	27,507	79.4%	176,576
Reclaimed	252	7,149	20.6%	40,349
Active	18			
<b>Total</b>	<b>5,585</b>	<b>34,656</b>		<b>216,925</b>

AMD Impaired Streams ‡ 5,609 miles  
 Delisted Streams '22-'24 134 miles

Individual features include site conditions like open mine shafts, waste coal piles, strip mine pits, subsidence prone areas, contaminated mine water discharges, and etc. Sites were abandoned prior to the passage of the Surface Mining Control and Reclamation act of 1977. Active status refers to remining of the site.

\*2021 PA DEP BAMR Reclamation and Remining Incentives Report cleanup costs averaged ~\$9,500/per acre. These are conservative acreage estimates: AML Feature Polygon layer was projected in ArcGIS from GCS North American 1983 to USA Contiguous Albers Equal Area Conic to preserve area and does not include AML Feature Points in the calculation of acreage.

‡ AMD stream miles do not include ~1,800 miles of Mercury contaminated streams loosely linked to AMD in the entire Clarion River Watershed. Source: 2024 Pennsylvania Integrated Water Quality Report: Clean Water Act Section 303(d) List and 305(b) Report